



Type(s)
Project
Date
Notes

GENERAL INFORMATION

The Flex Hog offers all the critical controls of the Tour Hog in a more minimalist form, perfect for more intimate productions or backstage setups. Packed with compelling, road-tested features in a compact design, the Flex Hog console provides RGB-backlit keys and motorized faders, five high-quality encoders with assignable wheel buttons, user and function keys for console customization.

The Flex Hog console’s advanced IO options include Neutrik EtherCON network connections, DMX, SMPTE, and USB on USB A- and C-type connections.

PRODUCT FEATURES

- Neutrik powerCON® TRUE1 power input and thru
- Two Neutrik EtherCON® Ethernet connections
- USB 3.0 type A (4) and type C (2) connectors
- Wi-Fi and Bluetooth antennas
- Four DMX outputs (5-pin XLR)
- SMPTE input (3-pin XLR)
- Desk Light Connector (3-pin XLR, standard Littlite pinout)

ORDERING INFORMATION

Flex Hog Console

MODEL	DESCRIPTION
6115A1001	Flex Hog Console

Flex Hog ships with: TRUE1 power input cable (US), keyboard, mouse, worklight, Capture lighting design software (Duet) and dust cover.

Attention: at least one external monitor (purchased separately) is required for console operation.

Related Products

MODEL	DESCRIPTION
6113A1001	Gig Hog programming wing
6114A1001	Tour Wing playback wing
6204A1001	HPU hybrid processing unit
Various	Response Network Gateways and Interfaces
Free Download	Hog PC Software
4380A1011	ETCnomad USB key, base (2 universes)
4380A1037	ETCnomad USB key, unlocked (12 universes)
6115A5001	Flex Hog road case (optional)
M7183	18" Littlite LED Gooseneck 90°



SPECIFICATIONS

SYSTEM CAPACITY

- 64 Universes

DISPLAY FUNCTIONS

- Six full color function key displays
- Supports two external display port monitors at 1280x1024 minimum resolution, with optional touch or multi-touch control
- User configurable displays with recordable views
- Dedicated views to access most-used items quickly
- Palette, list, views, scenes, batches, effects directories
- Programmer window
- Plot views
- Output window
- Fixture Schedule and Patch windows, sortable by fixture or by universe
- Three color schemes for daylight use, regular use or dark environment use

PROGRAMMING

- Compact RGB backlit command keypad for quick programming
- Command-line interface
- Programmer window displays selected and adjusted fixtures
- Lists constructed with +, -, and Thru or selection softkeys, Next, Back and All commands
- Intensity set with command keypad, full key, intensity palettes
- Ordered groups
- Comprehensive fanning using segments and buddying
- 12 Function keys for user kinds and commands
- Dedicated kind keys and five high-resolution parameter encoders, with two keys per encoder
- Eight user "U-Keys" for user defined functions
- Media picker window
- Hog Color System
- Programmer window
- Groups for simplified fixture selection
- Palettes: intensity, position, colour, beam, effects
- Effects Engine
- Pixelmapping Effects
- Park
- Undo command
- Delete, Move and Copy commands
- Highlight, lowlight and rem dim commands
- Cue level and parameter level timing
- Record, Update and Merge commands
- Knockout and Clear commands
- Set command for text labels and data entry

PLAYBACK CONTROLS

- 10 pageable, motorized RGB-backlit master playbacks with customizable faders, flash, go, halt, back and choose keys
- Main playback stack including GM, Restart, Assert, Release, Pig, Skip Forward, Skip Backward, Master Pause, and Master Play keys
- Master Ranges for quick reassignment of playback masters content
- Unlimited fader Pages
- Comment macros and keystroke macros
- Paging keys
- Virtual masters
- Scenes
- Batch controllers
- Group masters
- Triggering via Command keys
- Playback expansion via Tour Wing
- OSC input/output, MIDI messages, MIDI Show Control, MIDI/LTC timecode (MIDI via optional external MIDI interface)

INTERFACES AND ACCESSORIES

- Gig Hog programming wing
- Tour Wing playback wing
- HPU hybrid processing unit
- Response network gateways and interfaces
- ETCnomad

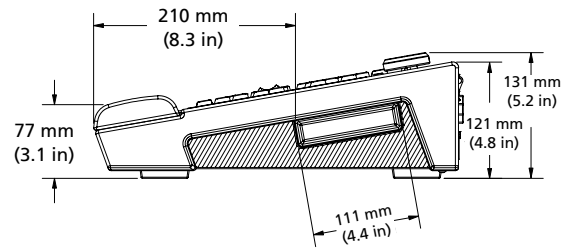
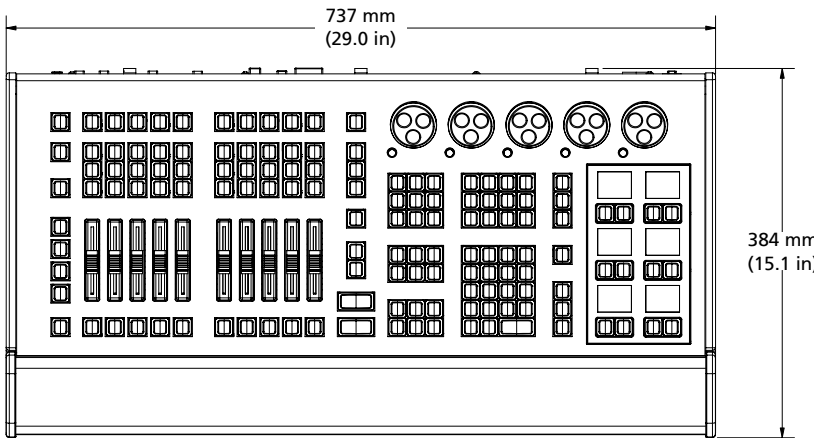
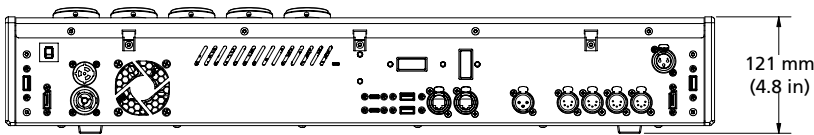
ELECTRICAL AND ENVIRONMENTAL

- ETL, CETL and CE compliance
- Mains power: 100–250 VAC, 50/60 Hz, max 80 W
- Mains connector: Neutrik PowerCON® TRUE1
- Breaker: 5.8 A

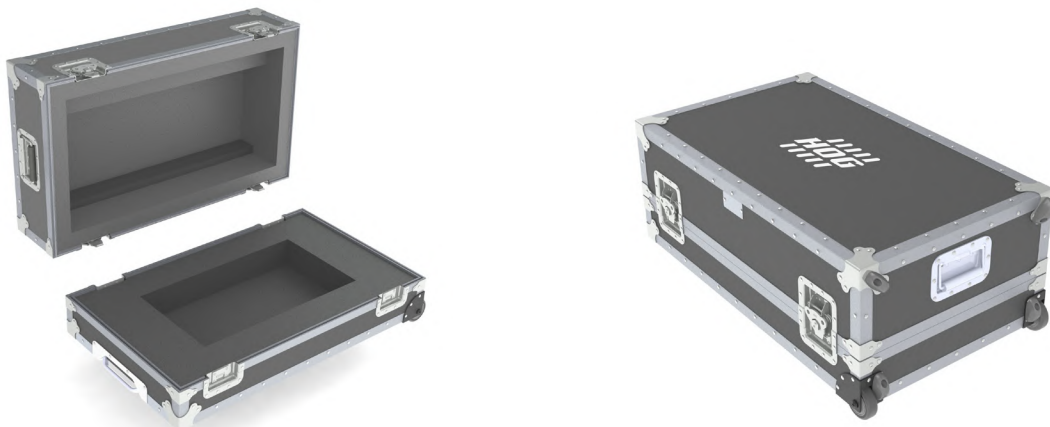
PHYSICAL

Flex Hog Dimensions and Weights

MODEL	HEIGHT		WIDTH		DEPTH		WEIGHT	
	mm	in	mm	in	mm	in	kg	lb
Flex Hog	131	5.2	737	29.0	384	15.1	12.3	27.0
Flex Hog road case (optional)	300	11.8	846	33.3	491	19.3	19.1	42.0



FLEX HOG ROAD CASE (OPTIONAL)



Corporate Headquarters • Middleton, WI USA
 Global Offices • London, UK • Rome, IT • Holzkirchen, DE • Paris, FR • Hong Kong • Dubai, UAE
 New York, NY • Orlando, FL • Los Angeles, CA • Austin, TX • Squamish, BC • Victor, NY
 ©2026 ETC. All Rights Reserved. All product information and specifications subject to change. Rev E 2026-03
 *Trademark and patent info: etconnect.com/IP • Third-party license agreement info: etconnect.com/licenses